

Animals including humans : Digestion

Keep referring to your knowledge organiser – see web page

Over the next two weeks, you must complete tasks 1, 2 and 3 and at least 2 additional tasks.

Task 1 - page 3, a discussion task with some questions to guide you.

Task 2 and 3 - page 8, describe what happens in the digestive system

Task 4: Use the website: <https://kidshealth.org/en/kids/dsmovie.html> and complete the quiz and word finder

Task 5: Use the website:

<http://www.childrensuniversity.manchester.ac.uk/learning-activities/science/the-body-and-medicines/digestive-system/>

and complete the on line quiz

Task 7: Research the digestive system of a cow. How is it different to a humans? Why are cows so important for climate change?

Task 6: Use the keywords (**in green**) on your knowledge organiser and create a wordsearch. Now generate a clue for each word to create a crossword.

A healthy body!

**Your digestive
system turns the
food you eat in to
the fuel that your
body needs.**



What happens inside you mouth?

Task 1: Take a bite of an apple or some other crunchy food. Concentrate on what happens inside your mouth, so you can describe what has happened to the apple.



If you need to : Take a second bite to help remind you what has happened.



Discuss the answers to these questions with your grown-up.

What did the biting?

Where did the chewing or grinding take place?

What else did you notice inside your mouth? Was there more liquid perhaps?

Finally, what did your tongue do?

What is the first stage of the digestive system?



What is the function of the teeth?

Food enters the mouth where it is chewed and mixed with saliva into manageable pieces that can be swallowed.

**Once you've chewed
your food, how long do
you think it takes to get
to your stomach?**



6 Seconds!

**What if you were upside down –
would it take a different amount of
time?**

Still about 6 seconds – but I wouldn't recommend trying!



Watch this video to find out how the digestive system works

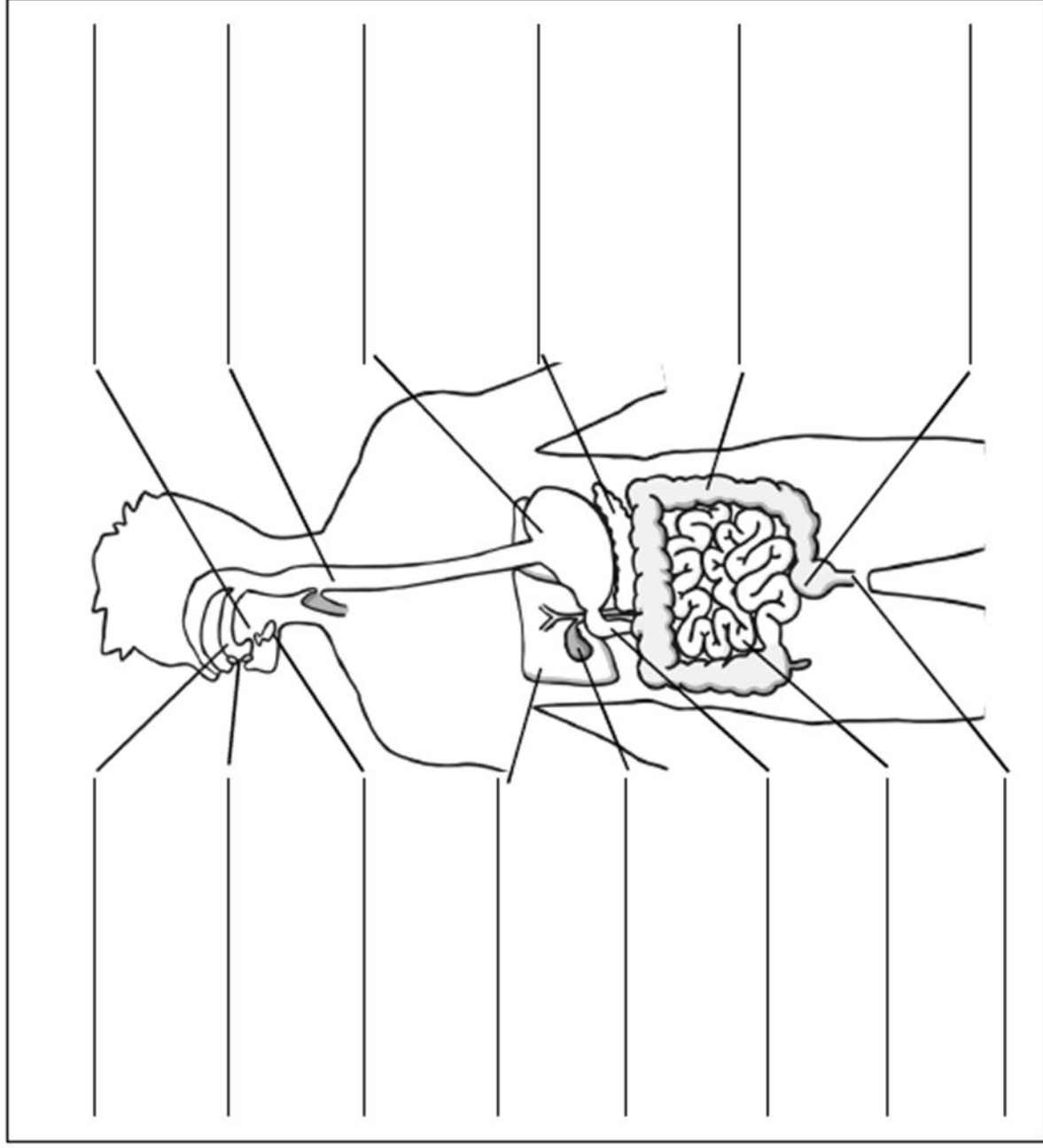


<https://www.stem.org.uk/resources/elibrary/resource/35396/digestive-system-experiment>

Task 2: Use the information from the video link above, your knowledge organiser and on the following pages to tell someone what happens to food in the three key stages of digestion. You can draw diagrams, record yourself or make a powerpoint to present your work.

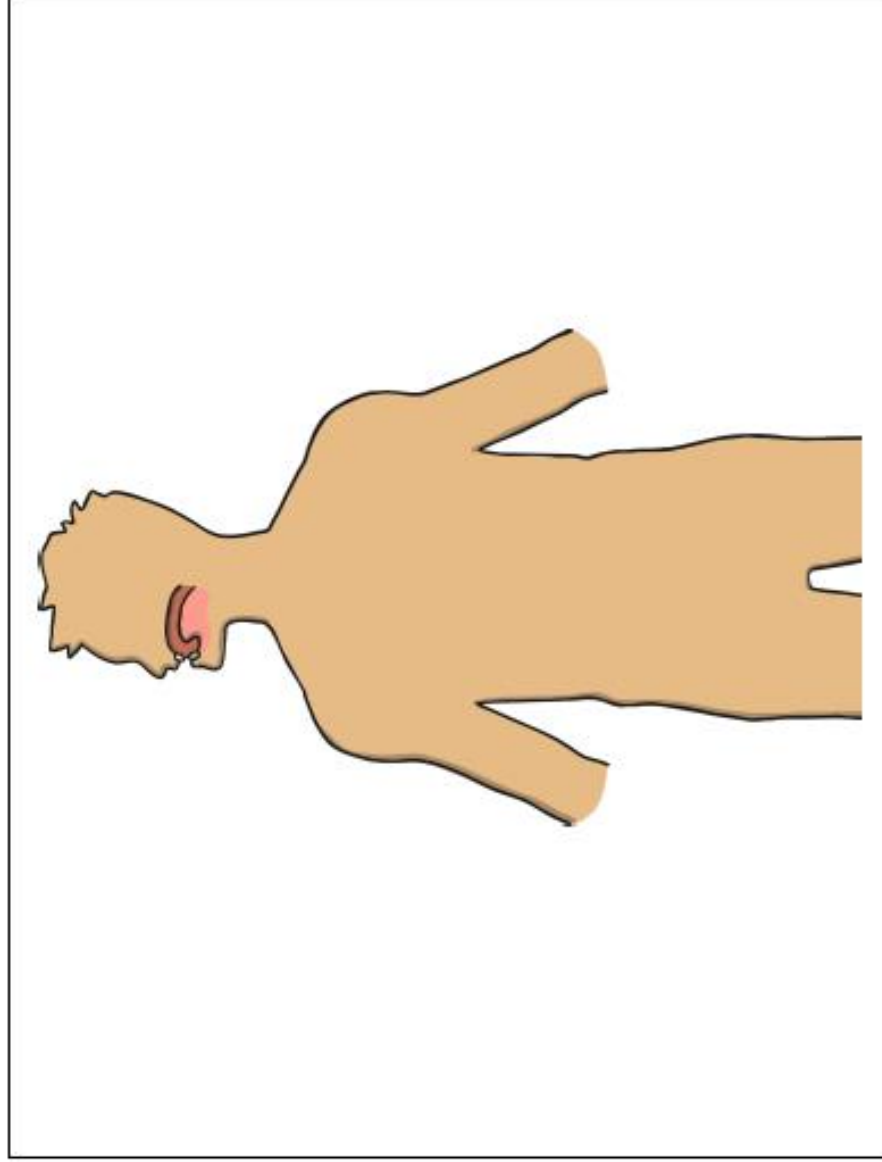
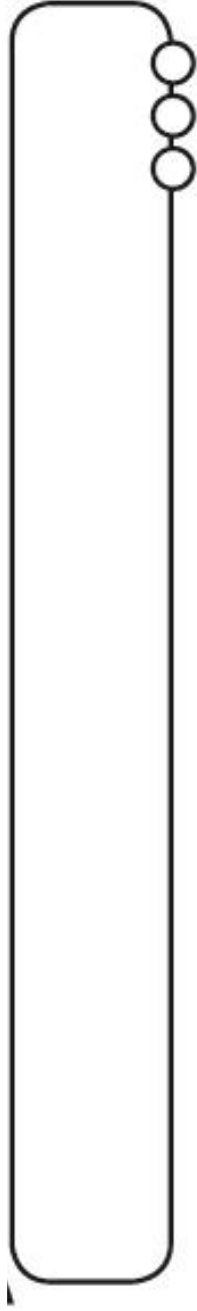
Task 3: Choose **one** of the two diagrams on the next pages and complete as instructed.

Naming Parts of the Digestive System



Key words: mouth, tongue, teeth, salivary glands, oesophagus, stomach, duodenum, small intestine, large intestine, gallbladder, pancreas, liver, rectum, anus.

Naming Parts of the Digestive System



Cut out these parts and assemble them on the body outline.



Use the key words to label the parts of the digestive system.

Key Words:

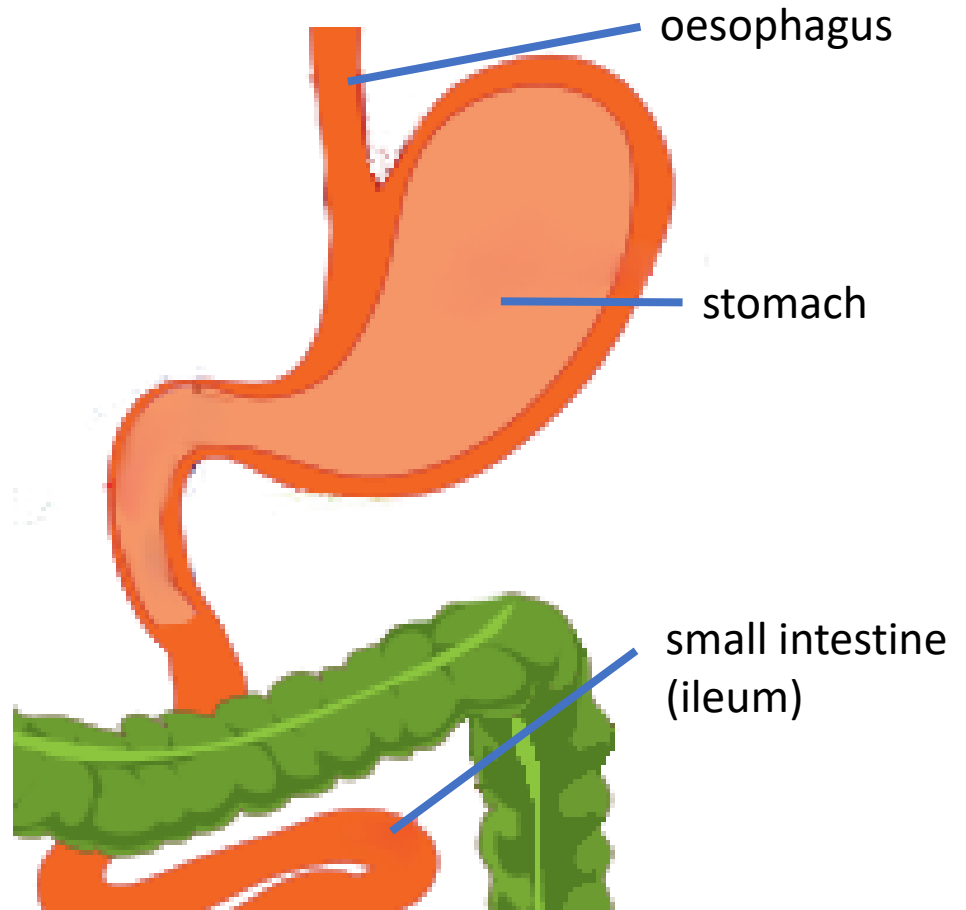
mouth, tongue, teeth, salivary glands, oesophagus, stomach, duodenum, small intestine, large intestine, gallbladder, pancreas, liver, rectum, anus

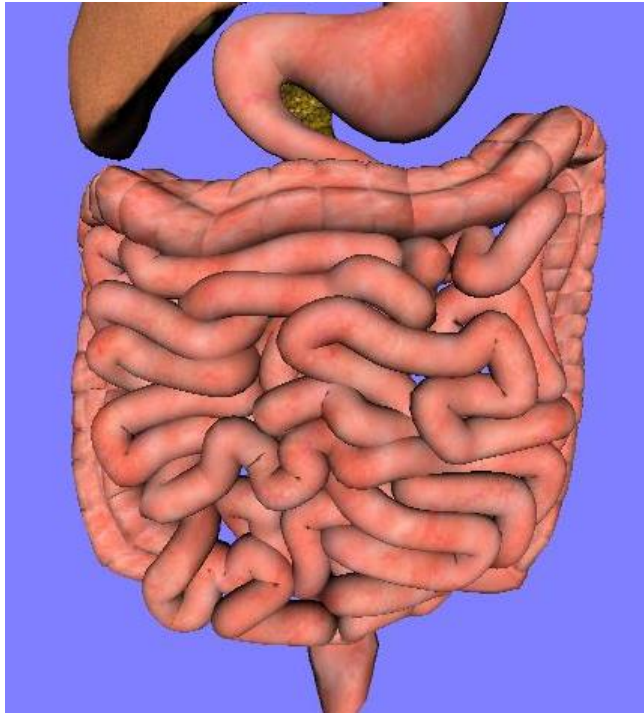
Food is moved along the esophagus (food pipe or gullet) between the mouth and the stomach by the muscles around it. They move in a worm-like motion called peristalsis and push the food towards the stomach.



The Stomach

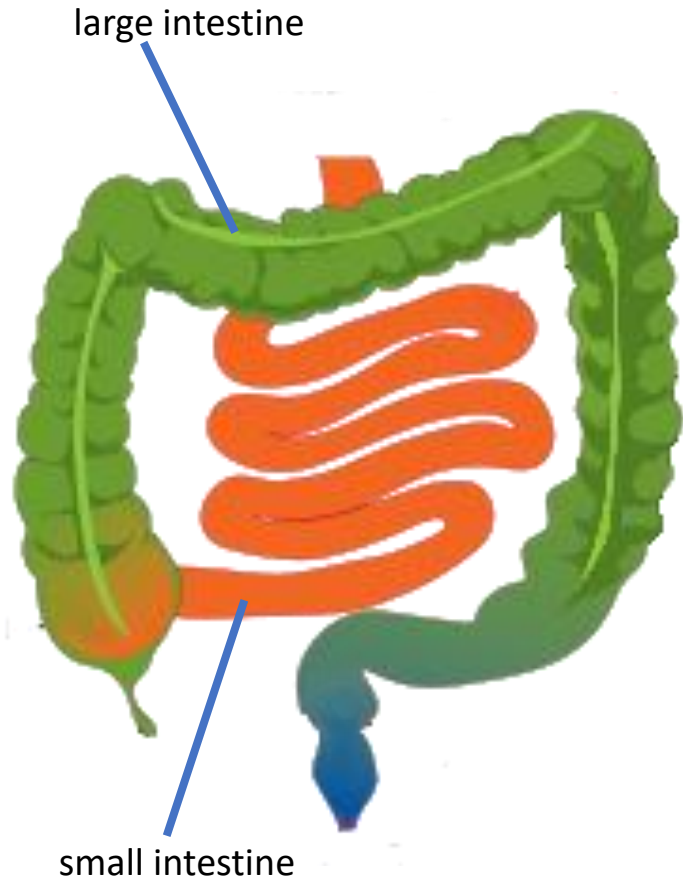
The acids and enzymes in the stomach break down the food. The muscles surrounding it contract to help churn up the food.





The Small Intestine

The partially digested food then moves from the stomach to the small intestine. It takes about 20 minutes for your chewed up food to travel from your mouth to here. The small intestine does most of the work – almost all of the digestion and absorption of nutrients and minerals happens here. The remains of the food move along the intestine by peristalsis, just like it does through the oesophagus. It is about 7 metres long!



The Large Intestine

If the small intestine is 7 metres long, how long do you think the large intestine is?

It is actually only 1.5 metres long. It is called the large intestine because it is a lot wider than the small intestine. It is the final stage of the digestive system. The last of the water is absorbed, and the waste hardens and forms faeces (poo).