



# ANIMALS including Humans

## KNOWLEDGE ORGANISER

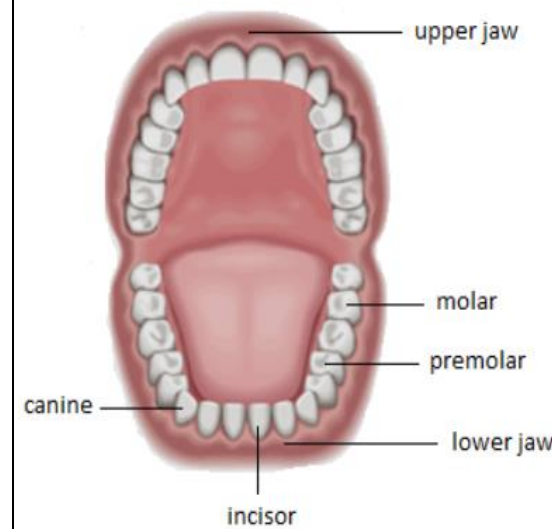


### What you should already know...



- Animals cannot create their own food, they must eat in order to get **nutrition**.
- Because of this, animals are called **consumers**.
- Animals and humans need the right types and amounts of nutrition.
- Nutrition groups include **carbohydrates, fats, proteins, fibre, vitamins and minerals**.
- Skeletons** are important for support, movement and protection. **Muscles** help us to move and keep our posture.

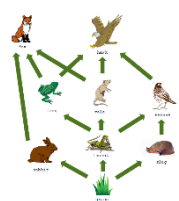
### Teeth



- Humans get 2 sets of teeth. Adults have up to **32 teeth**, made up of 4 different types. Each of these types have an important job:
  - Incisors** (at the front) are used to cut food.
  - Canines** are used to tear food.
  - Pre-molars** are used to crush food.
  - Molars** (at the back) are used to grind or chew food.
- Our teeth are like this because we are **omnivores**. Different animals have different teeth layouts depending on their food. **Carnivores** have sharp pointed canines for tearing meat. Many **herbivores** have chisel like front teeth that grow continuously.

### Food Chains

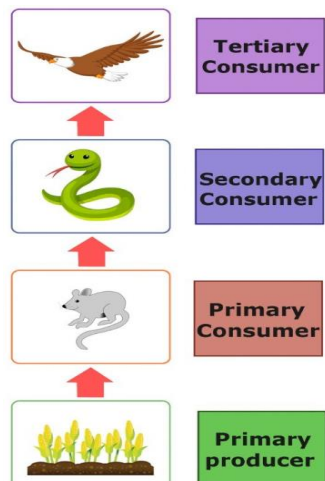
#### What are Food Chains?



-Food chains show how each living thing gets food, and how nutrients are passed from **producers** through different **consumers**.

-Food chains begin with plant life, and end with animal life. At the top of the food chain are **apex predators** – animals which have no natural **predators** that eat them. They eat other animals (**prey**).

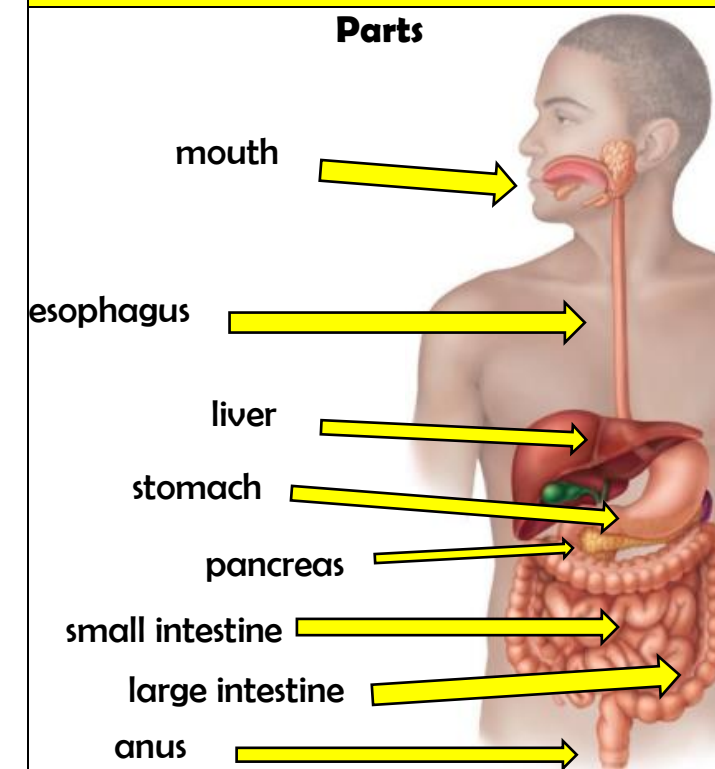
#### Example Food Chain



#### Explanation

- Producers** are able to make their own food (for example plants, through photosynthesis).
- Primary consumers** are animals that eat producers.
- Secondary consumers** are animals that eat primary consumers.
- Tertiary consumers** are animals that eat secondary consumers.
- Each plant and animal in the food chain is affected by the others. For example, if there were fewer mice in the **habitat**, there may be more plants (because the mice aren't eating them) but less snakes (fewer mice to eat).

### The Digestive System



#### Stages/ Functions

Digestion takes place in the **alimentary canal**. There are **three main stages** of digestion:

**Ingestion** – The food is taken in by the mouth, and broken down by teeth and **saliva**. It moves down the **esophagus** by **peristalsis** (an involuntary muscular movement).

**Absorption** – Food is further broken down in the **stomach** and **intestines** by **acid, bile and enzymes**. Nutrients are absorbed into our bodies through our blood. The **liver** and **pancreas** produce the bile and enzymes to help the digestion along.

**Excretion** – Waste food that the body doesn't need is sent to the **anus** for excretion.

Digesting food takes many hours.

### Rainforest Food Chain

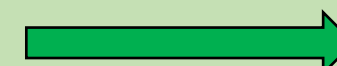
Producer  
Banana Tree



Primary Consumer  
Monkey



Secondary Consumer  
Chimpanzee



Tertiary Consumer  
Leopard

