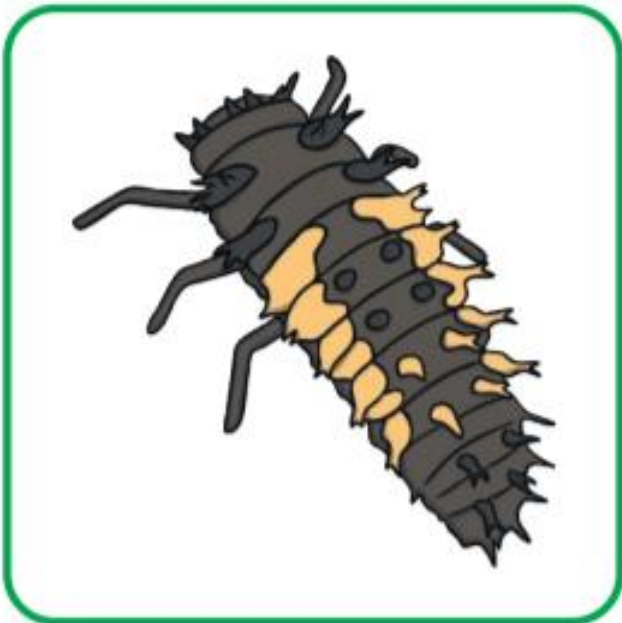


Cut out the below and sequence them in the right order...



The Life Cycle of a Ladybird

An adult ladybird emerges!



The female ladybird lays its eggs onto a leaf.



The eggs hatch and the larvae are born. They will spend their time feeding on aphids to grow and be ready for the next stage of life.



They form 'pupae'. This stage lasts 5-7 days.

