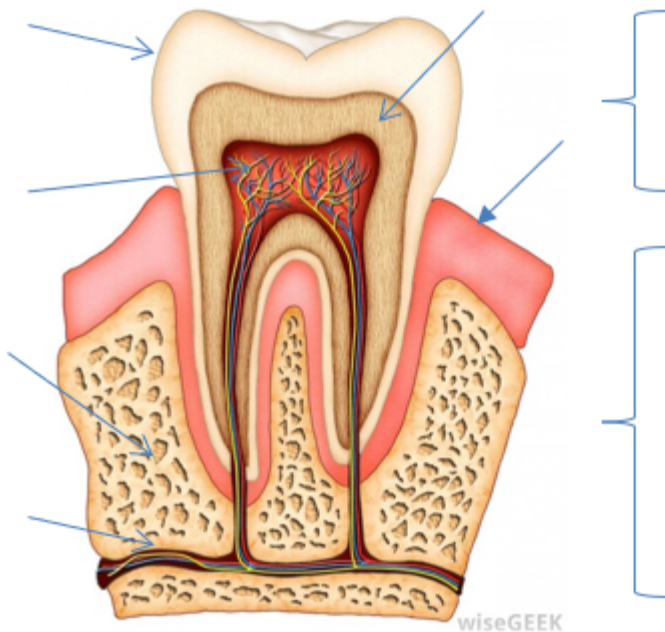


## LO: I can label the cross section of a human tooth.

### Cross section of a tooth

Use the words below to label this diagram



roots	nerves and blood vessels	pulp
gums	dentin	enamel
	enamel	crowns

Only about one third of a tooth can be seen. This part of the tooth is called the           . Beneath the            and buried in the            are the           . These help to anchor the tooth to stop it falling out.

The outer surface of the tooth is called           , it is white and hard. It is the *hardest* substance in our bodies!

Underneath the           , is the           , this supports the outer layer and carries some nerve fibres.

At the centre of the tooth is the           . It contains            and           . These keep the tooth alive and with the            keep the tooth in place in the bony surroundings.